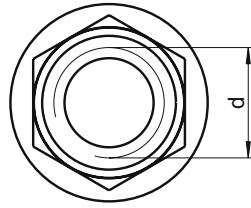
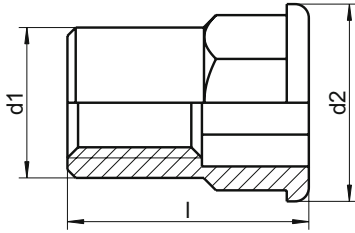


# WS 9317

## Blind rivet nuts

with flathead head and hexagon shank



d	d1	d2	l	clamping range
M4	6	9	11,5	0,5-2,5
M5	7	10	13,5	0,5-3,0
M6	9	12	15,5	0,5-3,0
M8	11	12	17,5	0,5-3,0
M10	13	16	22,0	1,0-4,0

Grade	SU
▲	250
▲	250
▲	250
▲	250
▲	250

■ A1 / ▲ A2 / ● A4 | SU: Sales unit | All measurements in mm | Other dimensions on request.

Example item no. 9317-2-8 WS 9317 - A2 - M8