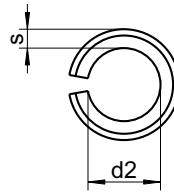
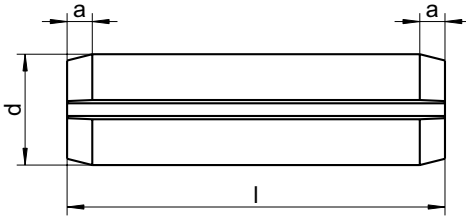


# sim. ISO 8752 - DIN 1481

## Spring-type straight pins

slotted



a min.	0,15	0,25	0,35	0,40	0,50	0,60	0,65	0,80	0,90	1,20	2,00	2,00	2,00
d min.	1,2	1,7	2,3	2,8	3,3	3,8	4,4	4,9	5,4	6,4	8,5	10,5	12,5
d2	0,8	1,1	1,5	1,8	2,1	2,3	2,8	2,9	3,4	3,9	5,5	6,5	7,5
s	0,20	0,30	0,40	0,50	0,60	0,75	0,80	1,00	1,00	1,25	1,50	2,00	2,50
Length / Ø	1	1,5	2	2,5	3	3,5	4	4,5	5	6	8	10	12
4	FS	FS	FS	FS	FS	FS	FS						
5	FS	FS	FS	FS	FS	FS	FS						
6	FS	FS	FS	FS	FS	FS	FS	FS	FS				
8	FS	FS	FS	FS	FS	FS	FS	FS	FS				
10	FS	FS	FS	FS	FS	FS	FS	FS	FS	FS	FS	FS	FS
12	FS	FS	FS	FS	FS	FS	FS	FS	FS	FS	FS	FS	FS
14	FS	FS	FS	FS	FS	FS	FS	FS	FS	FS	FS	FS	FS
16	FS	FS	FS	FS	FS	FS	FS	FS	FS	FS	FS	FS	FS
18	FS	FS	FS	FS	FS	FS	FS	FS	FS	FS	FS	FS	FS
20	FS	FS	FS	FS	FS	FS	FS	FS	FS	FS	FS	FS	FS
22			FS	FS	FS	FS	FS	FS	FS	FS	FS	FS	FS
24			FS	FS	FS	FS	FS	FS	FS	FS	FS	FS	FS
26			FS	FS	FS	FS	FS	FS	FS	FS	FS	FS	FS
28			FS	FS	FS	FS	FS	FS	FS	FS	FS	FS	FS
30			FS	FS	FS	FS	FS	FS	FS	FS	FS	FS	FS
32					FS	FS	FS	FS	FS	FS	FS	FS	FS
36					FS	FS	FS	FS	FS	FS	FS	FS	FS
40					FS	FS	FS	FS	FS	FS	FS	FS	FS
45							FS	FS	FS	FS	FS	FS	FS
50							FS	FS	FS	FS	FS	FS	FS
55									FS	FS	FS	FS	FS
60									FS	FS	FS	FS	FS
65									FS	FS	FS	FS	FS
70									FS	FS	FS	FS	FS
75										FS	FS	FS	FS
80										FS	FS	FS	FS
90											FS	FS	FS
100											FS	FS	FS
SU	1000	1000	1000	1000	1000	1000	500	500	500 ≥ 50 250	500 ≥ 40 250	500 ≥ 26 250 ≥ 90 100	500 ≥ 26 250 ≥ 90 100	25

■ A1 / ▲ A2 / ● A4 | SU: Sales unit | All measurements in mm | Other dimensions on request.

Example item no. 1481-2-8X40 DIN 1481 - 1.4310 - Ø 8mm - l = 40mm

Spiral split pins can be found as DIN 7343 in this catalogue. Spiral split pins, light type DIN 7346 are available on request. Please note that spiral split pins DIN 1481 are not available in A4, because the material does not raise the desired elasticity.